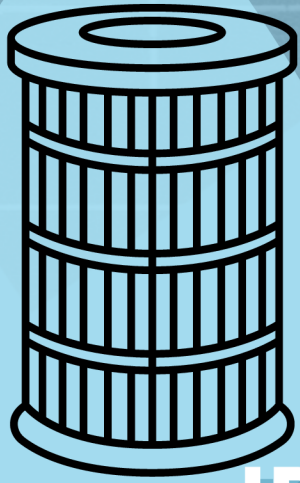


JBPHH WATER SYSTEM RESIDENT WATER FILTER GUIDANCE

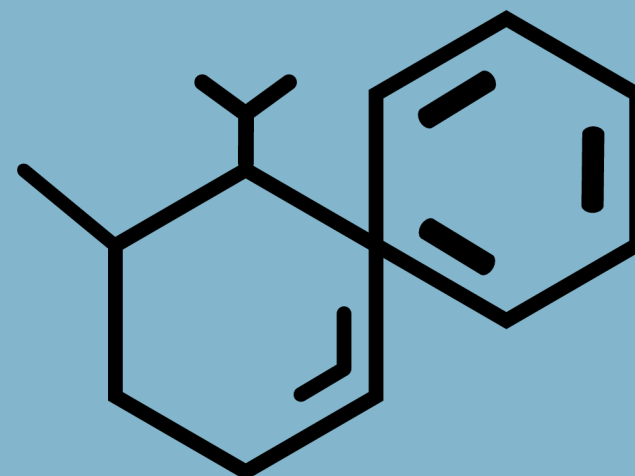


IDENTIFYING CERTIFIED FILTERS:

Residents of the Joint Base Pearl Harbor–Hickam (JBPHH) public water system are concerned about the safety and reliability of the tap water in their homes. Many residents have installed or are considering installing a filter to treat their home's tap water to reduce their risk of exposure to potential contaminants.

Due to the large number of contamination concerns that home filters may be designed to address and the complexity of filter certifications, it is difficult to independently identify a list of filters that are third party certified for the contaminants of concern in the JBPHH water system.

This fact sheet consolidates information on filter brands shared by residents, filter claims made on the product websites, and third-party certification of filters. The following information is provided as illustrative examples to help consumers understand their filter options. It is not intended to endorse any specific brands or products. Due to the complexity of product vetting, these examples are meant to offer practical guidance for residents.



CONTAMINANTS OF CONCERN:

JBPHH water system residents have expressed an interest in removing the following contaminants from drinking water:

- Benzene
- Toluene
- Xylene
- PFOS and PFOA, and the full suite of PFAS contaminants
- Lead
- Total Trihalomethanes (TTHMs)

(Continued on next page)

JBPHH WATER SYSTEM RESIDENT WATER FILTER GUIDANCE



UNDERSTANDING CERTIFICATION STANDARDS:

NSF/ANSI 372 – Ensures that filter materials do not leach harmful chemicals. Does not address contaminant removal.

NSF/ANSI 42 – Targets chlorine taste/odor and particulates. Does not cover the primary contaminants of concern.

NSF/ANSI 177 – Applies to shower filters for chlorine only. Does not cover the primary contaminants of concern.

NSF/ANSI 53 – Certifies reduction of health-related contaminants, such as lead, benzene, and TTHMs. Filters with this certification must still be reviewed for coverage of all relevant contaminants. Addresses contaminants of concern, but each contaminant must be listed individually on the certification.

NSF/ANSI 401 – Covers up to 15 emerging contaminants, including PFOS and PFOA, particularly useful for JBPHH residents. Addresses contaminants of concern, but each contaminant must be listed individually on the certification.

NSF/ANSI 58 – Certifies point of use reverse osmosis treatment units that are typically installed under sinks. Addresses contaminants of concern in JBPHH, but each contaminant must be listed individually on the certification. Due to additional expense and complexity, these units are not reviewed here.

FILTER CERTIFICATIONS AVAILABLE ON PRODUCT WEBSITES:

Table 1 on next page summarizes the filter brands evaluated. Filters have been grouped into the following categories based on documentation that is easily accessible on the company/product website:

1. NSF/ANSI 53 Certified for most contaminants of concern; search specific filter certifications before purchasing
2. NSF/ANSI 53 Certified for limited contaminants
3. Claims certification, but no certifying entity or certification provided
4. Certified to NSF/ANSI 177 (chlorine only)
5. Certified to NSF/ANSI 372 only
6. No certification claims

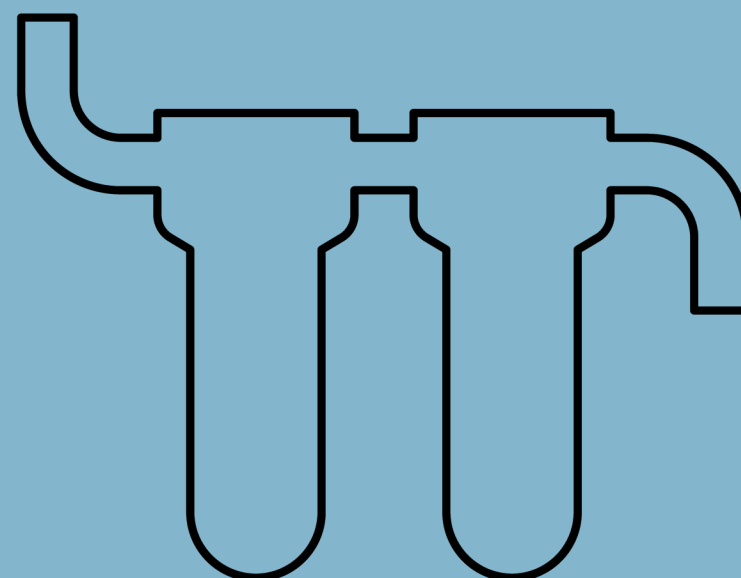
FILTER PLACEMENTS TO CONSIDER:



**SINK FAUCETS
(KITCHEN/BATHROOM)**



SHOWER HEADS/TUB FAUCETS



WHOLE HOME SYSTEMS

(See Table on next page)

JBPHH WATER SYSTEM RESIDENT WATER FILTER GUIDANCE

TABLE 1:
FILTER COMPARISON TABLE

Filter Brand	Category	Website
Hydroviv	NSF/ANSI 53 certified for most contaminants of concern Search specific filter for certifications before purchasing	https://www.hydroviv.com/collections
Aqua Sauna	NSF/ANSI 53 certified for most contaminants of concern Search specific filter for certifications before purchasing	https://www.aquasana.com/under-sink-water-filters/
AquaTru	NSF/ANSI 53 certified for most contaminants of concern Search specific filter for certifications before purchasing	https://aquatruwater.com/
Waterdrop	NSF/ANSI 53 certified for most contaminants of concern Search specific filter for certifications before purchasing Ignore units only certified to NSF 42	https://www.waterdropfilter.com/pages/find-your-water-filter?ref=headermenu
Berkey	NSF/ANSI 53 certified for limited contaminants	https://www.berkeywaterfilter.com/product/british-berkefeld-7-ceramic-ultra-sterasyl-water-filter-nsf-certified-2-pack/
Sprite Showers	NSF/ANSI 177 for chlorine	https://www.spriteshowers.com/
Kleen Water	NSF/ANSI 372 only	https://www.kleenwater.com/
Aquayouth	Claims certification, but certifying entity or certificate not provided	https://aquayouth.com/
Atlantis Filter	Claims certification, but certifying entity or certificate not provided	https://www.atlantisfilter.com/products
eSpring	Claims certification, but certifying entity or certificate not provided	https://www.amway.com/en_US/espring_
Pure Effect	Claims certification, but certifying entity or certificate not provided	https://www.pureeffectfilters.com/
The Perfect Water	Claims certification, but certifying entity or certificate not provided	https://www.theperfectwater.com/

(Continued on next page)

JBPHH WATER SYSTEM RESIDENT WATER FILTER GUIDANCE

TABLE 1: (CONTINUED)

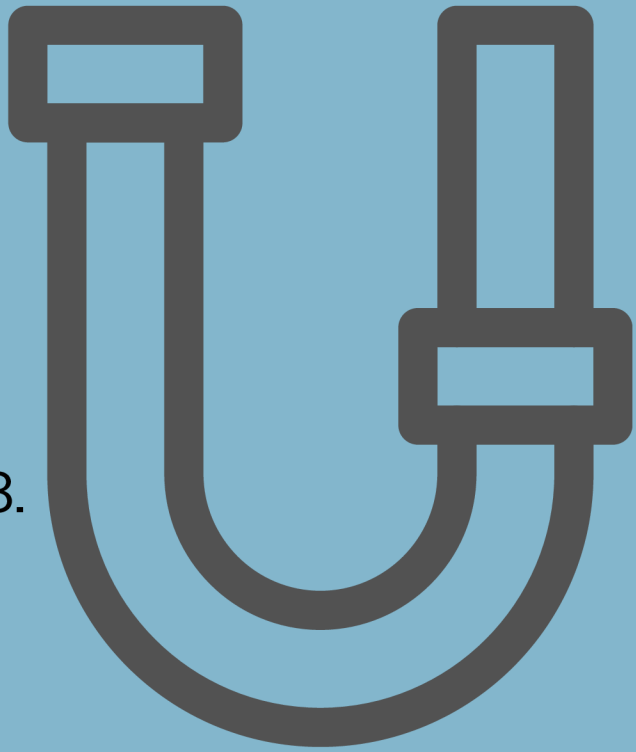
Filter Brand	Category	Website
Pono Revival	No certification claims	https://ponorevival.com/
Cobbe	No certification claims	https://en.cobbe.com/
Crystal Quest - whole home	No certification claims	https://crystalquest.com/



SAFEGUARD AGAINST LEAD: (EXCERPT FROM JBPHH WATER QUALITY REPORT FOR 2024)

In accordance with Federal regulations, specifically 40 CFR, the following statements are required and provide information to safeguard against lead. The JBPHH Water System is responsible for providing high quality drinking water and removing lead pipes but cannot control the variety of materials used in the plumbing in your home. Because lead levels may vary over time, lead exposure is possible even when your tap sampling results do not detect lead at one point in time. You can help protect yourself and your family by identifying and removing lead materials within your home plumbing and taking steps to reduce your family's risk. **Using a filter, certified by an American National Standards Institute accredited certifier to reduce lead, is effective in reducing lead exposures. Follow the instructions provided with the filter to ensure the filter is used properly.** Use only cold water for drinking, cooking, and making baby formula. Boiling water does not remove lead from water. Before using tap water for drinking, cooking, or making baby formula, flush your pipes for several minutes. You can do this by running your tap, taking a shower, doing laundry or a load of dishes.

If you have a lead service line or galvanized requiring replacement service line, you may need to flush your pipes for a longer period. If you are concerned about lead in your water and wish to have your water tested, please contact the JBPHH Drinking Water Call Center at (808) 210-6968. Information on lead in drinking water, testing methods, and steps you can take to minimize exposure is available at <https://www.epa.gov/safewater/lead>.



GUIDANCE PROVIDED BY:



sierraclubhawaii.org

safewaterengineering.com