



WANT TO USE YOUR EXPERTISE TO MAKE A DIFFERENCE?

**HELP COMMUNITIES APPLY
FOR:**

*EPA'S COMMUNITY CHANGE
GRANTS PROGRAM*

Visit Our Website

environmentalprotectionnetwork.org



Environmental Protection Network (EPN)



Advances policies to address climate change and advance environmental justice



Provides pro bono capacity-building technical assistance



Works to diversify EPA's workforce by recruiting and mentoring



Network of 650+ EPA alumni volunteers



Responded to over 700 technical assistance requests



Assisted over 100 entities applying for upcoming funding opportunities



Helped communities access over \$7.5 million in federal funds

EPN's Pro Bono Capacity-Building Technical Assistance Team



Region 7
Shonali Palacios

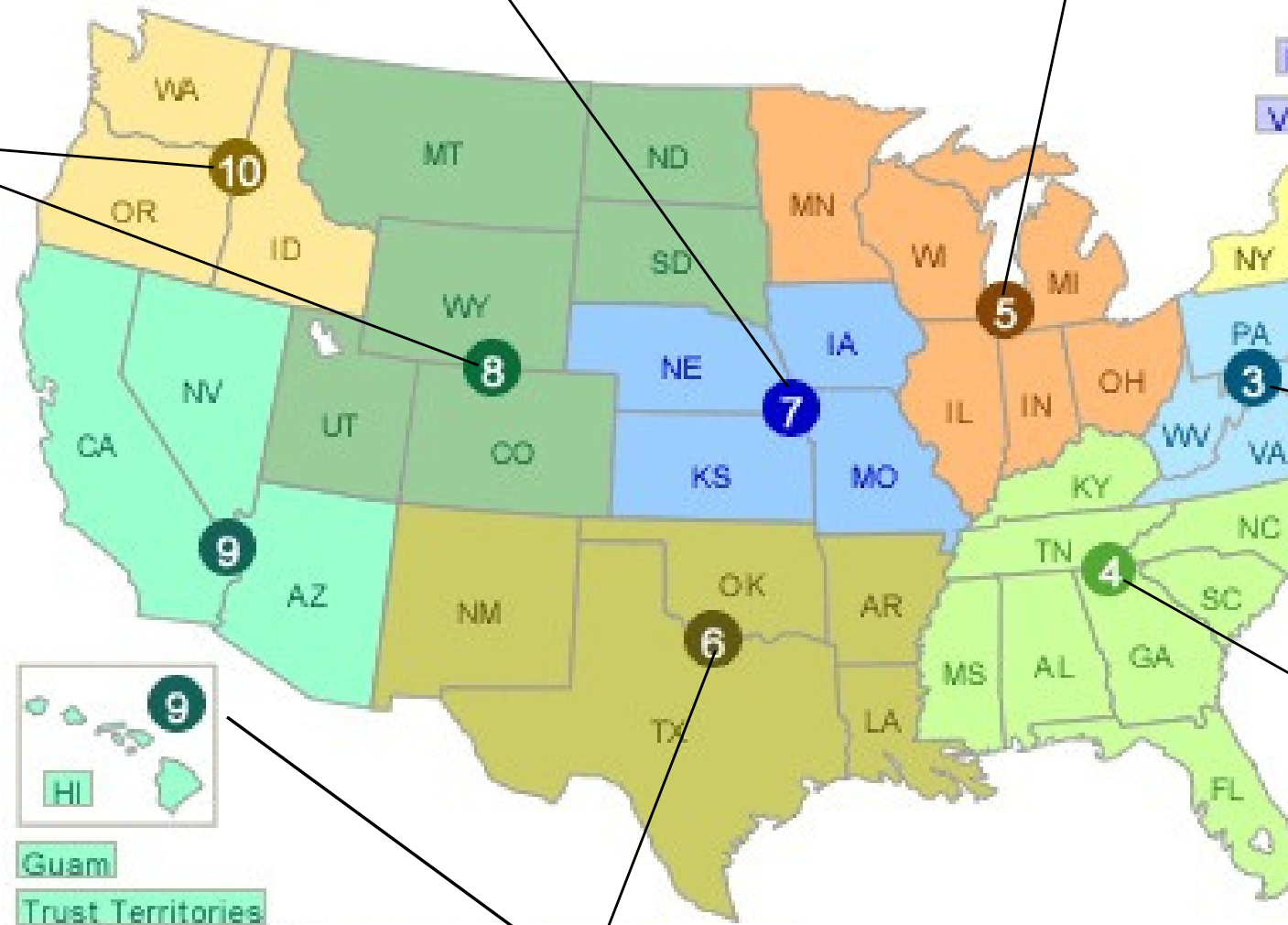


Region 5
Olivia Smith



Regions 1, & 2
Tribal Liaison
Davina Resto

Regions 8 & 10
Rudy



Region 3
Nora Ripley-Grant



Region 4
Sierra Taliaferro

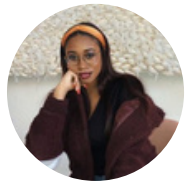


- Guam
- Trust Territories
- American Samoa
- Northern Mariana Islands

Region 6 & 9
Mitchelle Mukeli



PR and US VI
Lizbeth García Conde



Community Outreach Manager
Kya Williams



Senior Grants Specialist
Génesis Sánchez

WHAT IS THE COMMUNITY CHANGE GRANTS PROGRAM?

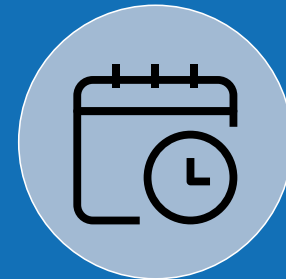


COMMUNITY CHANGE GRANTS

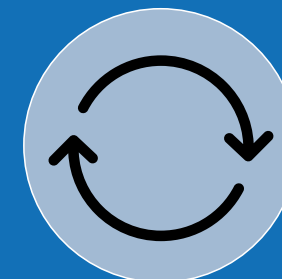
- Provides resources for community-driven projects
- Empowers communities and strengthens their capacity to drive positive change
- Invests in cross sectoral collaborations led by partners with deep expertise working with and serving disadvantaged communities
- Unlocks access to additional and more significant resources to advance environmental justice and climate justice
- Strengthens community participation in government decision-making



\$2 billion to be awarded



**Application Deadline
November 21, 2024
(if funding remains)**



**Rolling basis
application**



**Project Duration
3 years**

FUNDING AVAILABLE

TRACK I



\$1.96 Billion
~150 applications

TRACK II



\$40 Million
~20 applications



NOFO allows for a maximum of two applications by the Lead Applicant

TRACK I: COMMUNITY-DRIVEN INVESTMENTS FOR CHANGE

- Track I applications are multifaceted. They should:
 - Increase community resilience (must include at least one Climate Action Strategy).
 - Reduce pollution (must include at least one Pollution Reduction Strategy).
 - Benefit residents of disadvantaged communities during and beyond the grant period.
 - Include multiple partners or collaborating entities (community-centered program)
 - Create meaningful community engagement (from design to implementation).
- \$10-20 million limit per award
- Strong applications will be invited to do an oral presentation.

Climate Action Strategies

Your project must include at least one of these strategies.

Green Infrastructure and Nature-Based Solutions

Shade tree planting, stormwater projects, public parks and open spaces.

Mobility and Transportation

Installing bike lanes, walking paths, supplying low- or zero-emission transportation solutions.

Energy-Efficient, Healthy, and Resilient Housing and Building

Implementing energy efficiency measures such as insulation, “cool roofs,” retrofitting, and higher-efficiency upgrades.

Microgrid Installations

Construct microgrid infrastructure powered by low- and zero-emission renewable energy.

01

02

03

04

05

06

07

08

Community Resilience Hubs

Public-serving spaces that provide shelter and essential services during and emergency or disaster.

Brownfield Redevelopment

Revitalize brownfield sites that have already been cleaned up.

Waste Reduction and Management

Supporting circular economy activities such as efforts to reduce food waste or to promote the reduction, reuse and recycling of materials.

Workforce Development Programs

Developing career pathways in fields related to the reduction of GHG emissions and other air pollutants.

Pollution Reduction Strategies

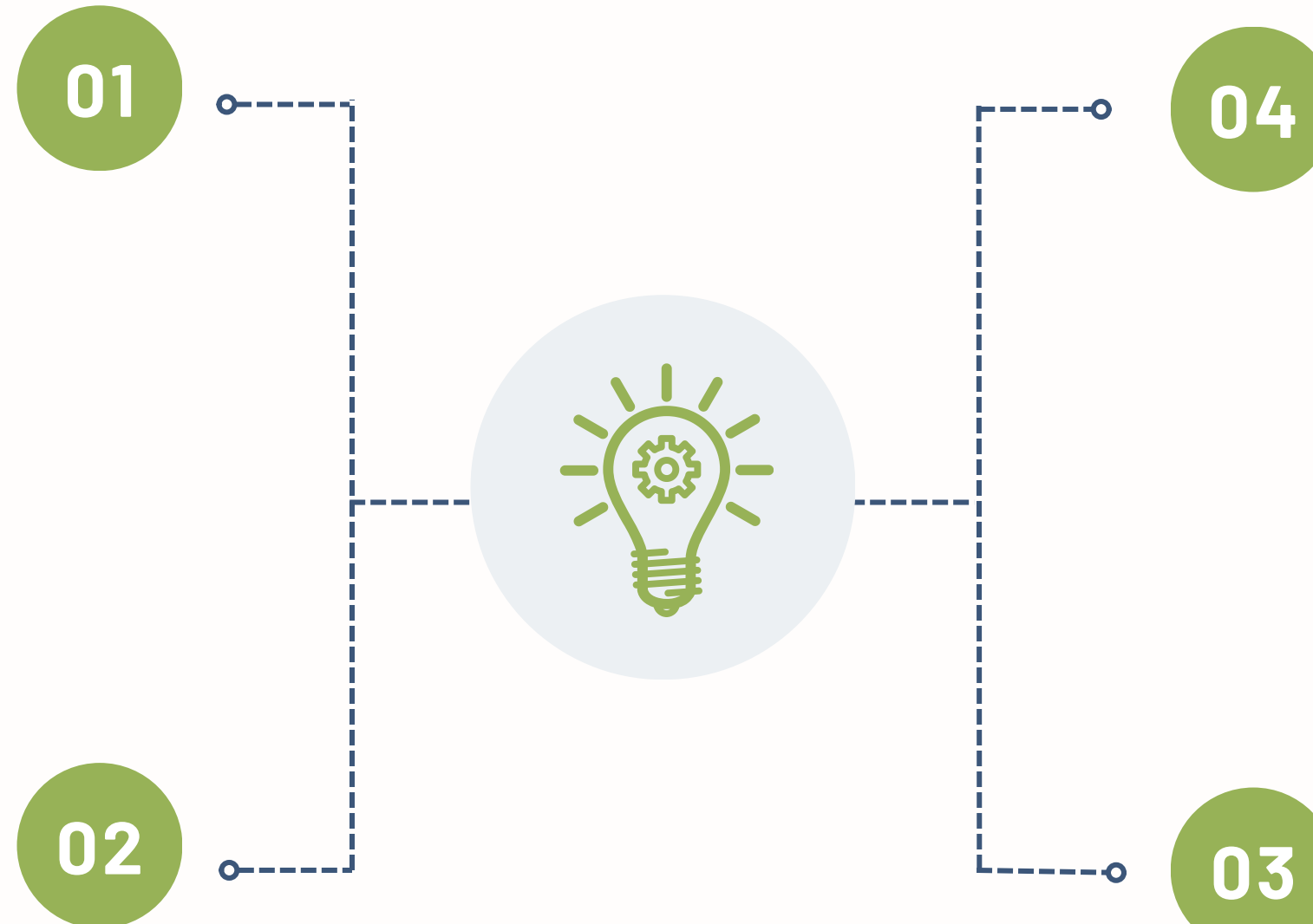
Your project must include at least one of these strategies

Indoor Air Quality

Education on air toxins / toxics, monitoring, outreach, and public education. Remediation or mitigation of harmful substances in buildings, replacement of wood heaters, creation of decontamination stations.

Outdoor Air Quality

Purchase, upgrade, and / or maintenance of equipment that limits outdoor air pollutants. Developing vegetative barriers, implementing sustainable construction practices, creating clean air zones.



Clean Water Infrastructure

Infrastructure projects, such as lead pipe replacements, renewable energy, efficiency upgrades, septic to sewer conversions. Planning or assessments that could lead to other sources of federal funding.

Safe Management and Disposal of Solid and Hazardous Waste

Pollution prevention, recycling, disposal or management of solid and hazardous waste, such as discarded electronics, tires, single-use plastics, etc.

TRACK II: MEANINGFUL ENGAGEMENT FOR EQUITABLE GOVERNANCE

- Projects should facilitate the engagement of disadvantaged communities in governmental processes to advance environmental and climate justice.
 - In State and Federal Advisory Groups
 - Workshops
 - Rulemakings
- \$1-3 million limit per award
- EPA expects to make ~20 Track II awards.
- No oral presentation component

TRACK II: MEANINGFUL ENGAGEMENT FOR EQUITABLE GOVERNANCE



GRANT APPLICATION REQUIREMENTS



MANDATORY REQUIREMENTS

- Application for Federal Assistance (SF-424)
- 2. Budget Information for Non-Construction Programs (SF-424A)
- 3. EPA Key Contacts Form 5700-54
- 4. EPA Preaward Compliance Review Report Form 4700-4



EXECUTIVE SUMMARY

Should not exceed three pages



PROJECT WORKPLAN



ATTACHMENTS

- Don't count as part of the project narrative
- Different for Track I and Track II applications

PROJECT NARRATIVE


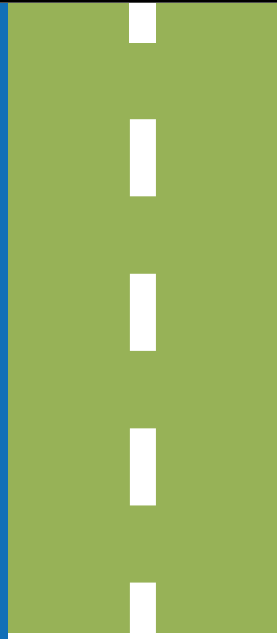
Together these should not exceed:

- **Track I:** 20 pages (single-spaced)
- **Track II:** 15 pages (single-spaced)



Excess pages will not be reviewed

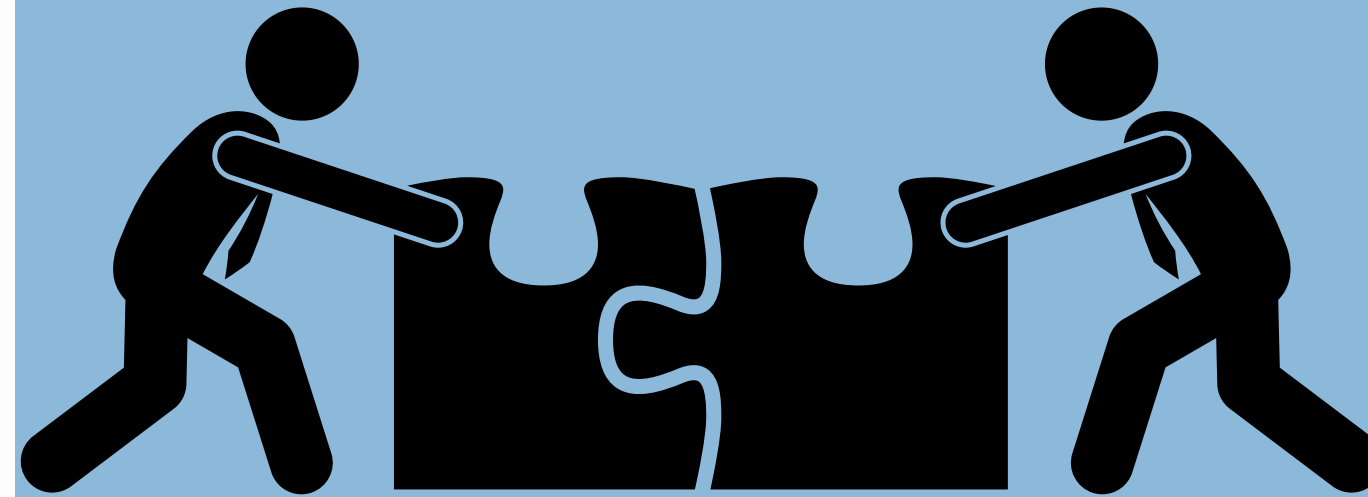
TRACK I VS TRACK II REQUIREMENTS

TRACK I	TRACK II	Requirements
		Project Narrative Attachment Form
		Attachment A: Program Budget Template
		Attachment B: Partnership Agreement
		Attachment C: Indirect Cost Rate Agreement, if applicable
		Attachment D: Project Area Map
		Attachment E: Community Engagement and Collaborative Governance
		Attachment F: Community Strength Plan
		Attachment G: Readiness Approach
		Attachment H: Compliance Plan



WHO CAN APPLY?

A partnership between two community-based organizations (CBOs)

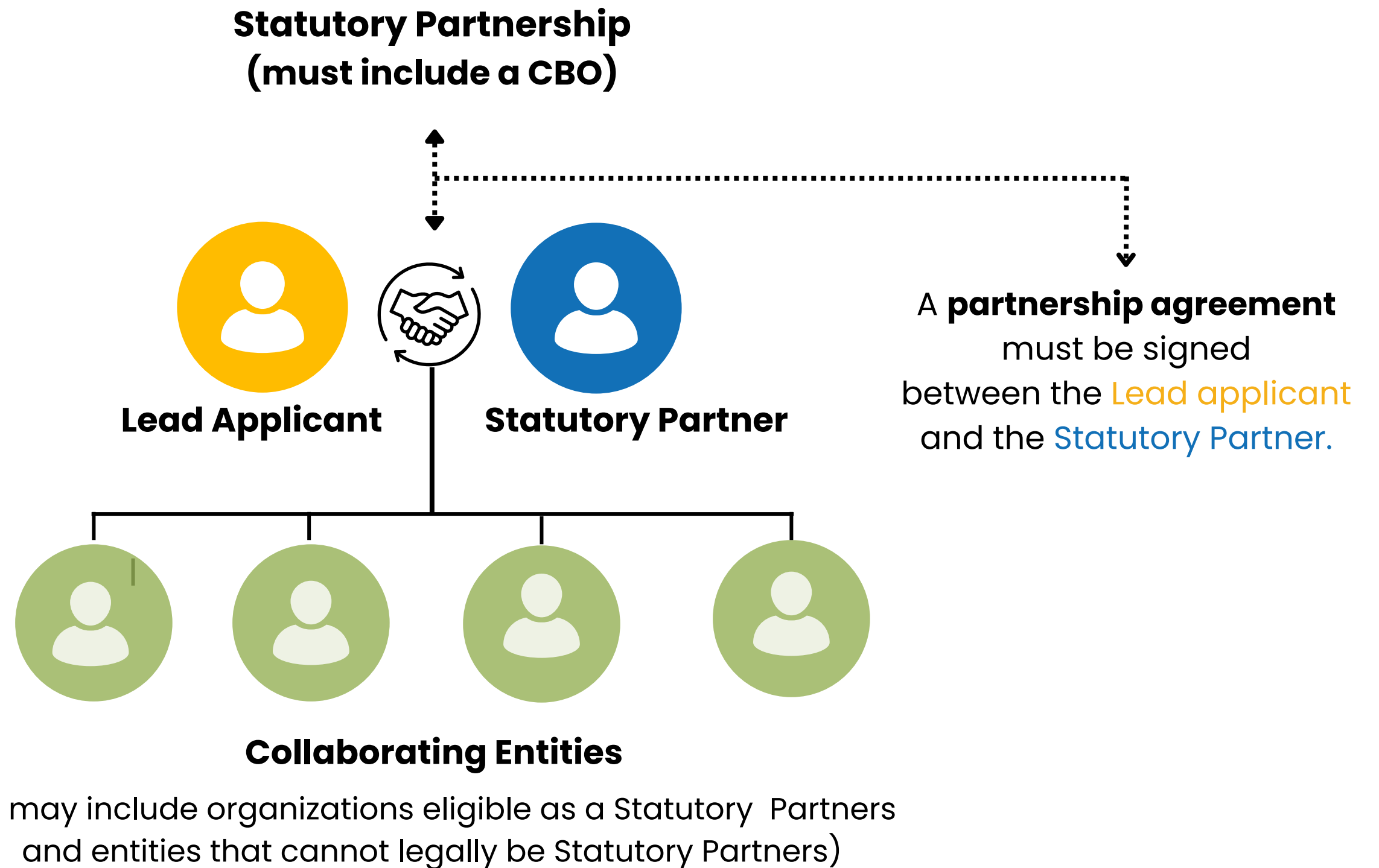


A partnership between a CBO and one of the following:

- A federally-recognized Tribe
- A local government (counties, boroughs, parishes, municipalities, cities, towns, etc)
- An institution of higher education

*Minority Serving Institutions are encouraged to participate:
Historically Black Colleges
Tribal Colleges and Universities
Other institutions*

STATUTORY PARTNERSHIP



 *For-profit organizations or individual consultants cannot be a collaborating entity*

WHAT COMMUNITIES WILL BENEFIT?



Any census block group that is at or above the 90th percentile when compared to the nation or state.



Any geographic area within Tribal Lands

Use the [EPA IRA Disadvantaged Communities Map](#) to identify if your project area appears as disadvantaged

All applications must benefit disadvantaged communities.



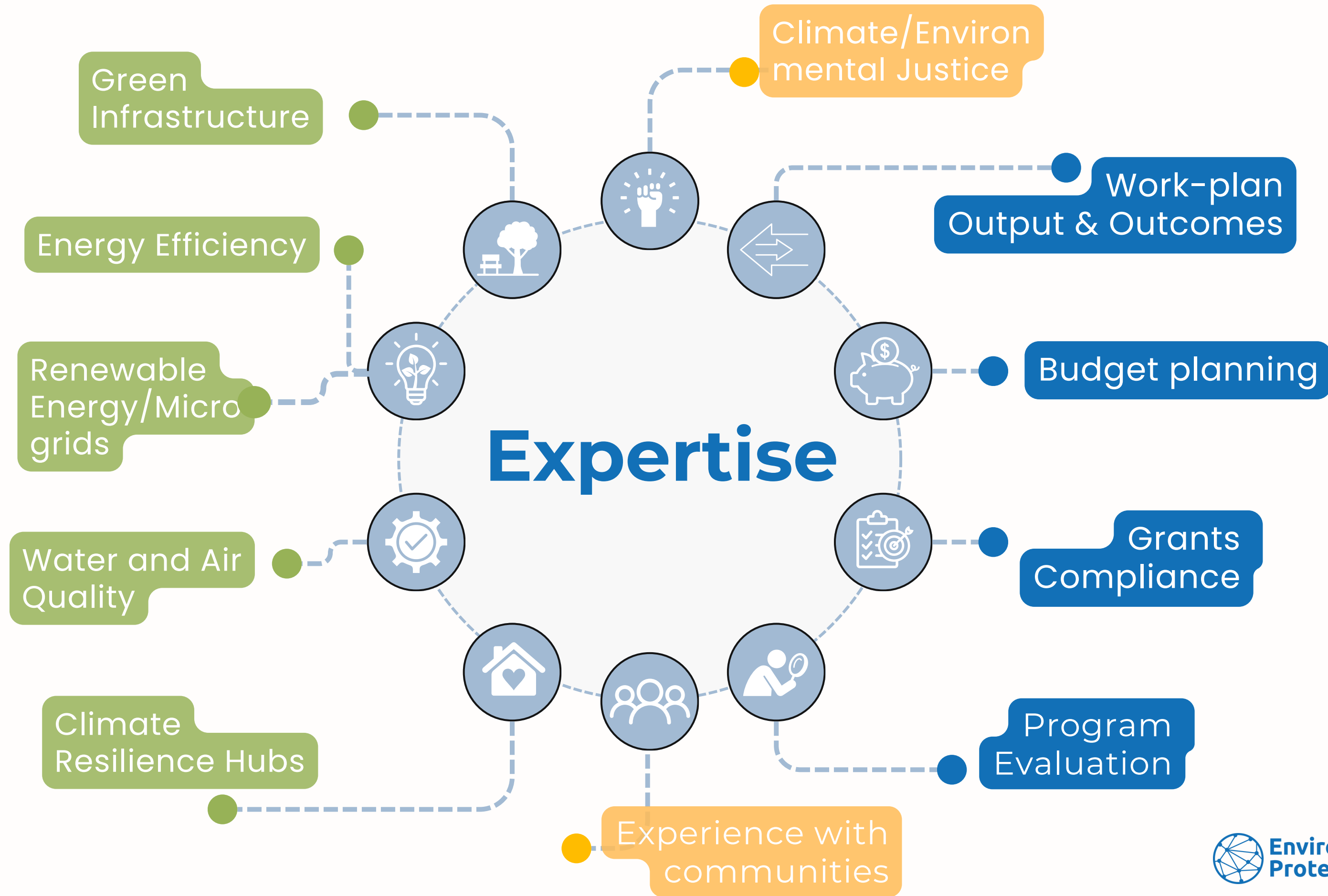
A farmworker community comprised of individuals with no fixed work address.



A Disadvantaged Unincorporated Community (DUC)

**How can you
leverage your
expertise to
support
communities?**





TECHNICAL ASSISTANCE OPPORTUNITIES

ASSISTANCE VIA EMAIL



Use your subject matter expertise to answer technical questions raised by community groups.

JOIN A CALL



Join virtual calls to meet with and support communities with brainstorming, project scoping and project eligibility.

DRAFT REVIEW



Leverage your academic and professional experience to review, edit, and comment on grant proposals drafts.



[SIGN UP HERE](#)

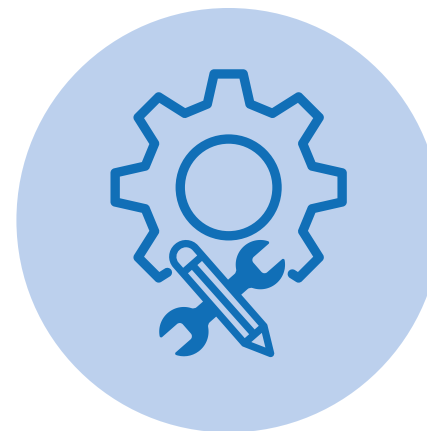
VOLUNTEER PROGRAM HIGHLIGHTS

FLEXIBILITY



As a volunteer, you decide how much time you want to volunteer and the type of technical assistance requests you want to assist with.

TRAINING



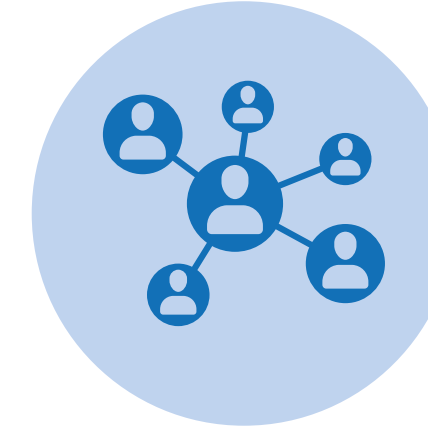
Participate in EPN's workshops to learn more about how to evaluate Community Change Grants applications.

CONNECTION



EPN will act as the bridge between communities and volunteers. You may also leverage your connections to support projects.

NETWORK



Become part of a network of 650 + volunteers who spent decades working at EPA and other federal agencies.



**Environmental
Protection Network**



SIGN UP
TO BECOME A
VOLUNTEER!

Visit Our Website
environmentalprotectionnetwork.org 